

What's New: Reporting and Analytics in PeopleSoft Enterprise

Todd Idler

Product Manager, Reporting & Analytics

February 25, 2005

Agenda

- Crystal Reports and Crystal Enterprise
 - New agreement with Business Objects
 - Crystal Products Overview
 - Demonstration
 - Details
- Analytic Calculation Engine
- Questions

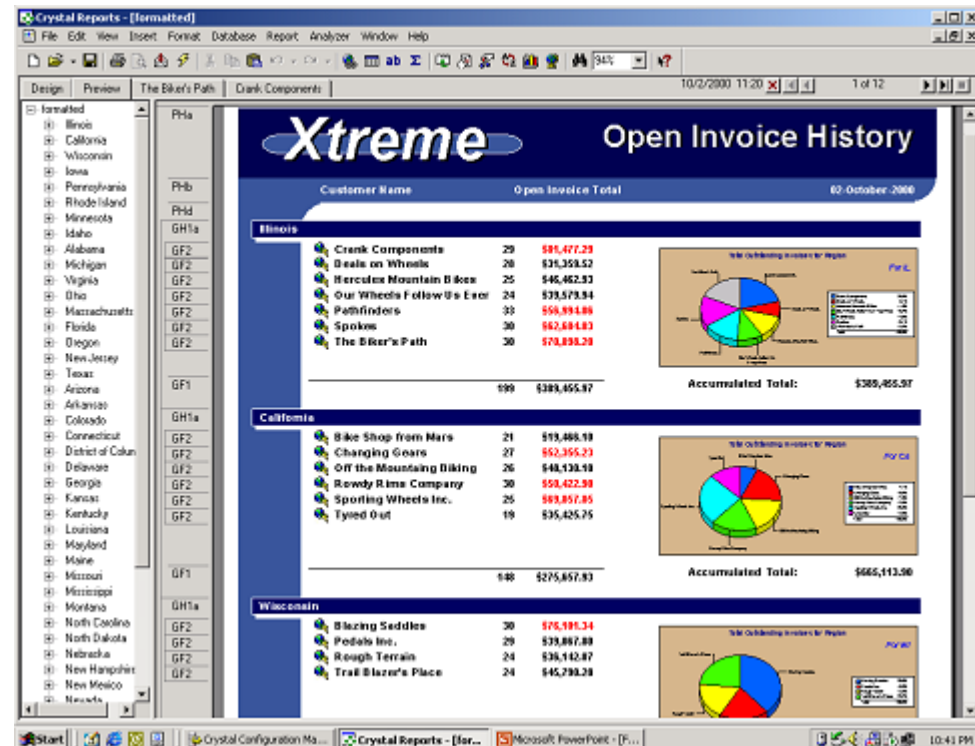
What is the New Agreement?

- Extension of our existing Crystal Reports agreement
- Expanded rights
 - Use of Crystal products with PeopleSoft Enterprise, JD Edwards EnterpriseOne, and JD Edwards World
- Expanded Product Offering
 - Crystal Reports
(Windows-based, pixel-perfect report creation)
 - Crystal Enterprise
(Server-based report management and distribution)
 - Crystal Reports Explorer
(Web-based report creation/modification)
 - Live Office
(Active integration with Microsoft Office)

Crystal Products – Powerful Authoring

- Tightly integrated data access
- Rich report formatting
 - Charts
 - Conditional highlights
 - Formulas
- Interactive navigation and drill-down paths for user exploration

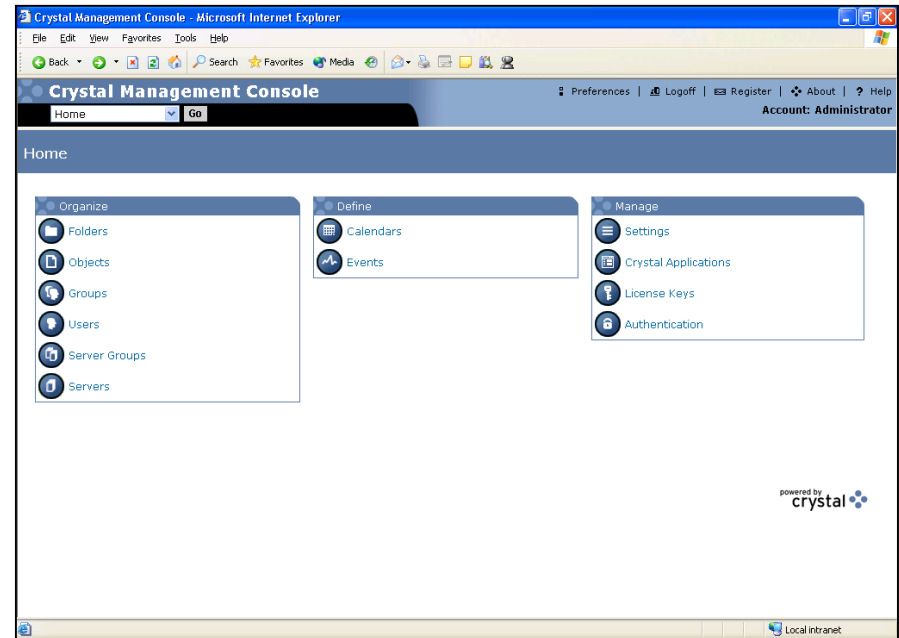
Crystal Reports *from Business Objects*



Crystal Products – Centralized Distribution

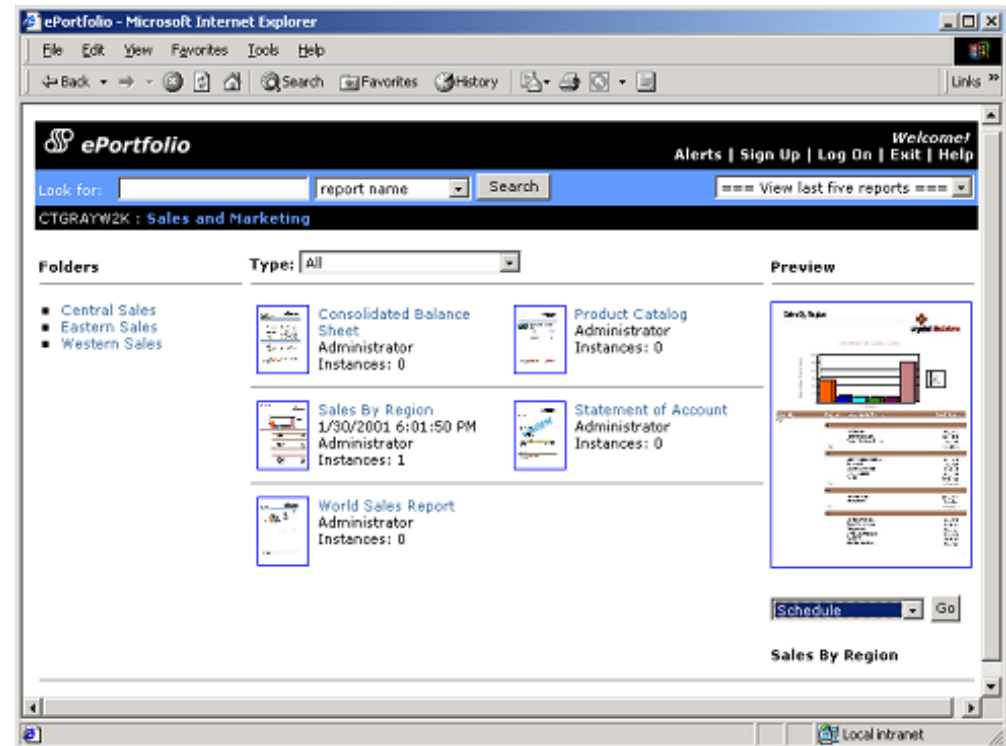
- One platform for data access and delivery & user management
- Built for broad-scale deployments
 - High-availability systems that adapt to changing user loads
 - Certified reliability to 99.999%
- Centralized for security
 - Single console for managing services
 - IT controls data access, system performance, user functionality

Crystal Enterprise *from Business Objects*



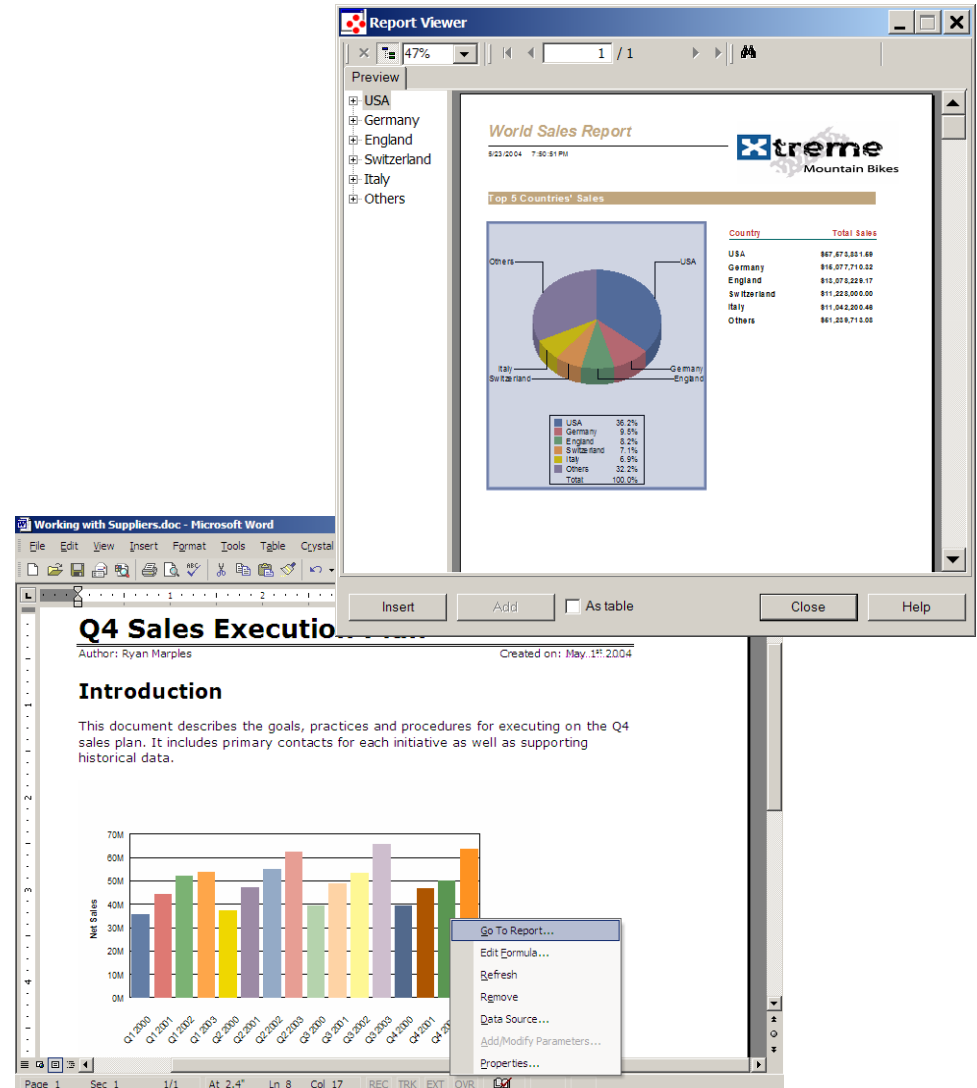
Crystal Products – Scalable

- Single point of administration
- Fast response times and on-demand report processing
- Heavy concurrency and large data volumes without degradation



Crystal Products – Live Office

- Embed accurate, dynamic data in documents, spreadsheets and presentations
- Security to protect corporate data
- Explore underlying reports for the data used in documents



Crystal Products – Proven

- 10th generation technology
 - Continuously evolved over 12 years
- A market standard
 - Over 15 million licenses shipped



Demonstration

- Tight integration with a world-class enterprise reporting environment
 - Addresses requirements of professional report authors **and** business users
 - Cost-effective to acquire additional capabilities
- Capability to report from multiple PeopleSoft instances from a single infrastructure
- A PeopleSoft solution for support, sales, and service

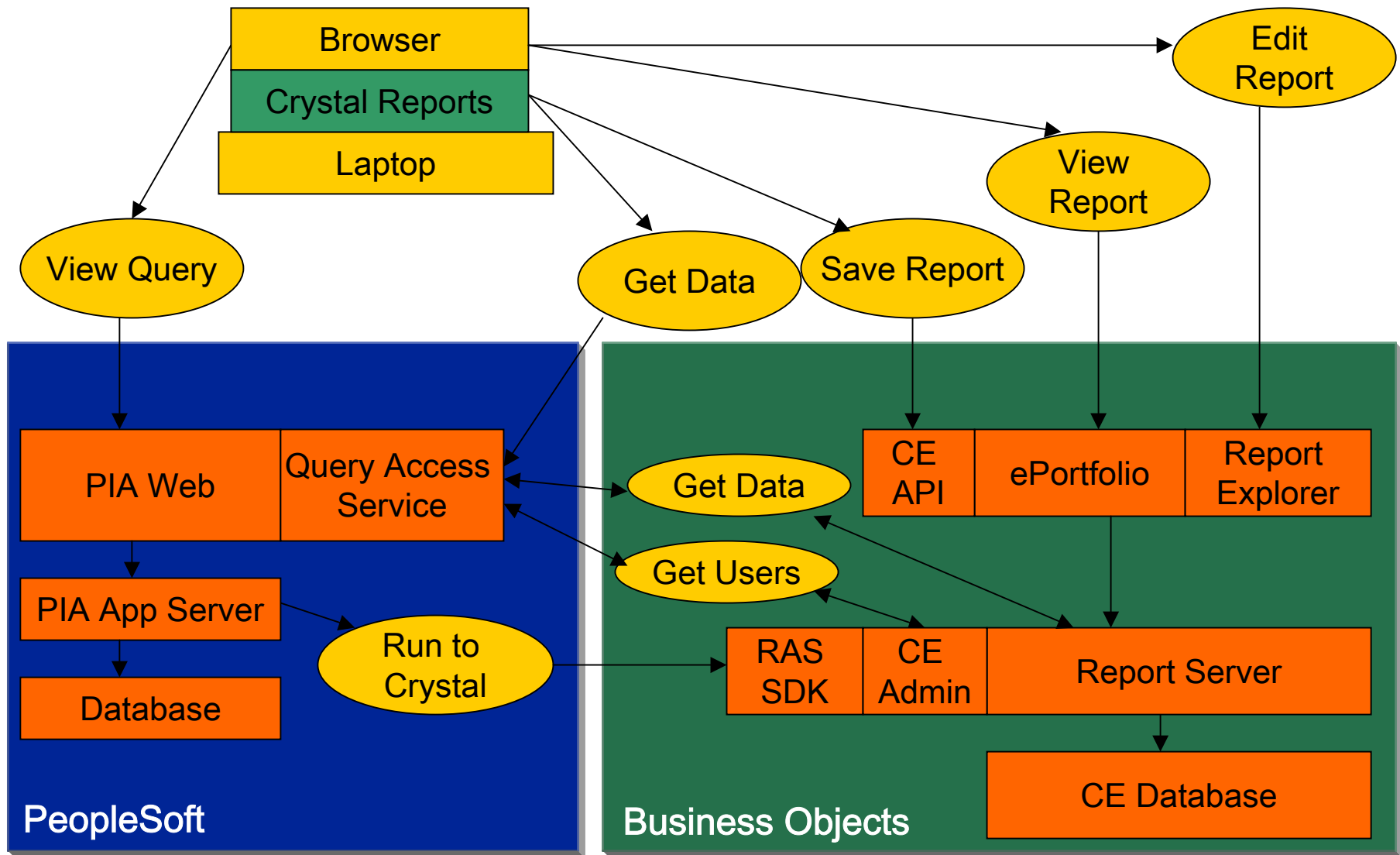
What Integration will be Delivered, When?

- PeopleSoft Enterprise 8.46 – Q1 2005
 - Security: Single sign-on and synchronization of users and roles
 - Query Access Service: Web service with streaming PS/Query results
 - Creation: Export to Crystal button from PS/Query

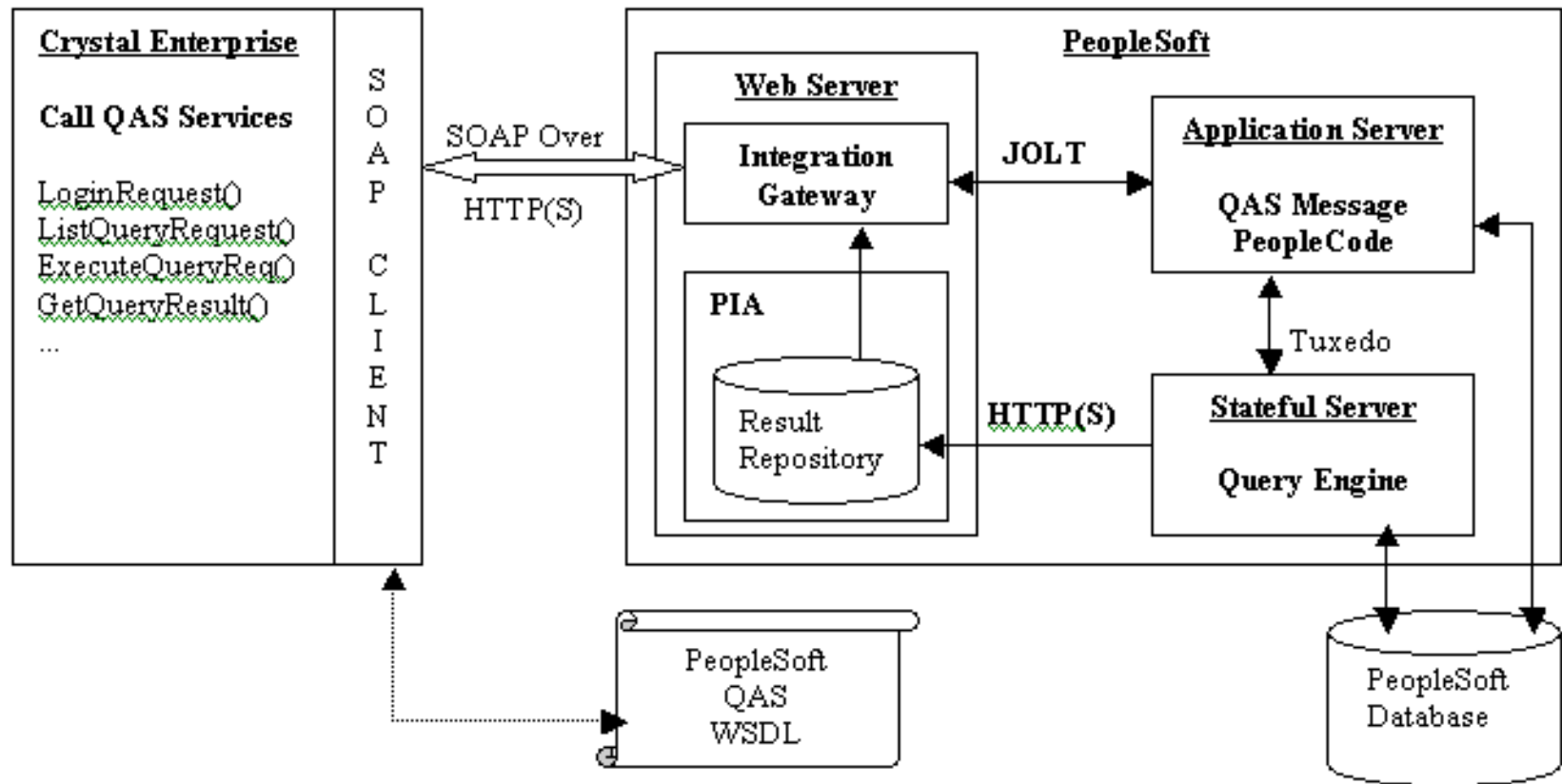
Key Integration Points

- **Run to Crystal**
 - PeopleSoft user opens PS/Query in browser
 - Press Run to Crystal and builds report with RAS SDK
 - Browser then opens report in Crystal Report Explorer in another window
- **Crystal Enterprise**
 - PeopleSoft user clicks on Crystal Enterprise link in PIA
 - Opens ePortfolio application to browser folders of reports
 - User can view, run and schedule reports.
 - Report uses Data Driver that calls Query Access Service
- **Crystal Report**
 - Windows application on client desktop
 - Can open reports from CE and can create new ones as well
 - Previewing report from CR will also call our Query Access Service
 - CR can also save new and changed reports to CE

PeopleSoft and Crystal Integration



Query Access Service Overview



- Beginning with PeopleTools 8.46, PeopleSoft Enterprise customers will receive:
 - Unlimited deployment of Crystal Reports (we've provided this since 1993)
 - 5 Concurrent Access License (5 CAL's) of Crystal Enterprise
- Additional blocks of CAL's can be purchased if and when they are needed

Analytic Calculation Engine

Analytic Calculation Engine (FKA BAM)

Highlights:

- Address TOE issues: install, configuration, platforms, upgrade
- Separate calculation engine from viewing interface
- Model Designer part of AppDesigner
- Hierarchical Dimensions
- Visualization - enhanced grid

<div>All Ranges</div>		<div>Single Category</div>								
		<div>FY01</div>				<div>FY02</div>				<div>FY03</div>
		<div>Q1</div>	<div>Q2</div>	<div>Q3</div>	<div>Q4</div>	<div>Q1</div>	<div>Q2</div>	<div>Q3</div>	<div>Q4</div>	
<div>Gross Revenue > East > Computers</div>										
<div>Gross Revenue</div>										
<div>East</div>										
<div>Computers</div>		1,659,360	1,659,360	1,659,360	1,659,360	1,659,360	1,659,360	1,659,360	1,659,360	1,659,360
<div>Memory</div>		390,428	390,428	390,428	390,428	390,428	390,428	390,428	390,428	390,428
<div>4MB Desktop</div>		22,104	22,104	22,104	22,104	22,104	22,104	22,104	22,104	22,104
<div>8MB Desktop</div>		39,529	39,529	39,529	39,529	39,529	39,529	39,529	39,529	39,529
<div>16MB Desktop</div>		64,993	64,993	64,993	64,993	64,993	64,993	64,993	64,993	64,993
<div>4MB Laptop</div>		49,126	49,126	49,126	49,126	49,126	49,126	49,126	49,126	49,126
<div>8MB Laptop</div>		102,084	102,084	102,084	102,084	102,084	102,084	102,084	102,084	102,084
<div>16MB Laptop</div>		112,592	112,592	112,592	112,592	112,592	112,592	112,592	112,592	112,592
<div>Printers</div>		215,836	215,836	215,836	215,836	215,836	215,836	215,836	215,836	215,836
<div>Peripherals</div>		606,264	606,264	606,264	606,264	606,264	606,264	606,264	606,264	606,264
<div>Support</div>		75,888	75,888	75,888	75,888	75,888	75,888	75,888	75,888	75,888
<div>Product Total</div>		2,341,512	2,341,512	2,341,512	2,341,512	2,341,512	2,341,512	2,341,512	2,341,512	2,341,512
		<div>First Column1-20 of 38Last Column</div>								

ACE: PeopleTools 8.46 Integration

- Single install
- Configuration of servers through psadmin.exe
- Use of SAM for data loading and write-back
- Upgrade & translation through standard processes
- Full PeopleCode APIs
- Standard PIA pages for display of drag & drop views

Questions & Answers