

What's New: Reporting and Analytics in JD Edwards EnterpriseOne

Todd Idler

Product Manager, Reporting & Analytics

February 25, 2005

Agenda

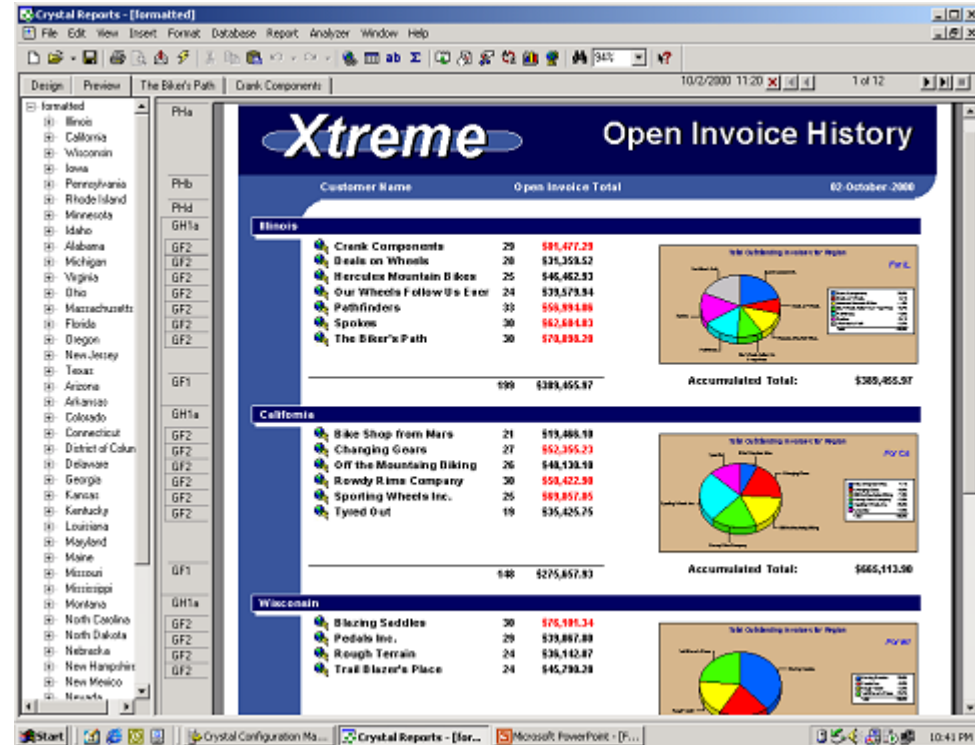
- New Agreement with Business Objects
- Crystal Products Overview
- Demonstration
- Details
- Questions

What is the New Agreement?

- Extension of existing Crystal Reports agreement
- Expanded rights
 - Use of Crystal products with PeopleSoft Enterprise, JD Edwards EnterpriseOne, and JD Edwards World
- Expanded Product Offering
 - Crystal Reports
(Windows-based, pixel-perfect report creation)
 - Crystal Enterprise
(Server-based report management and distribution)
 - Live Office
(Active integration with Microsoft Office)

- Tightly integrated data access
- Rich report formatting
 - Charts
 - Conditional highlights
 - Formulas
- Interactive navigation and drill-down paths for user exploration

Crystal Reports from Business Objects



Crystal Products – Flexible Deployment

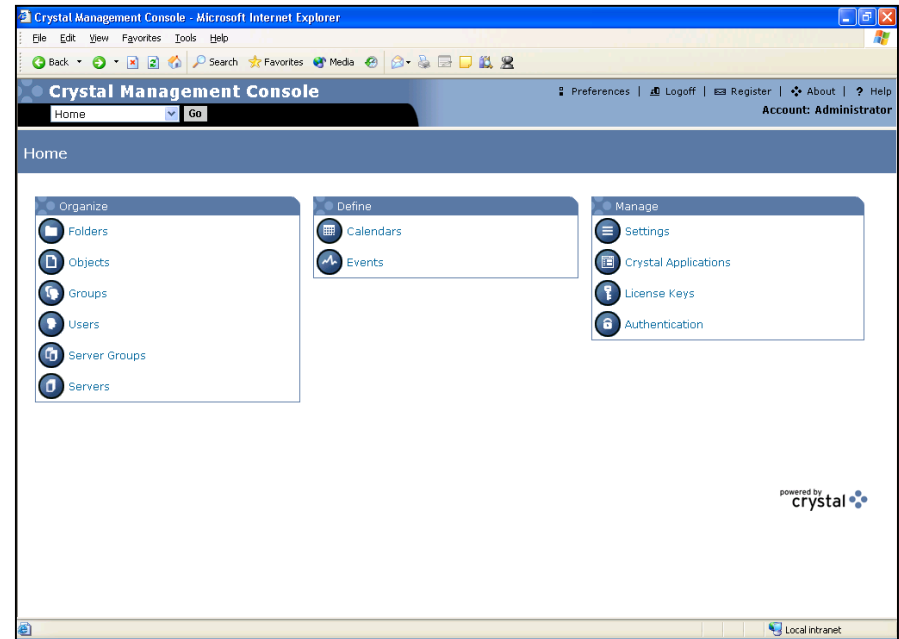
- Provide end users with reports in the format they want
- Deployment options
 - Crystal Interactive Reports
 - HTML
 - PDF
 - Microsoft Office Documents



Crystal Products – Centralized Distribution

Crystal Enterprise *from Business Objects*

- One platform for data access and delivery & user management
- Built for broad-scale deployments
 - High-availability systems that adapt to changing user loads
 - Certified reliability to 99.999%
- Centralized for security
 - Single console for managing services
 - IT controls data access, system performance, user functionality



Crystal Products – Live Office

- Embed accurate, dynamic data in documents, spreadsheets and presentations
- Security to protect corporate data
- Explore underlying reports for the data used in documents

The screenshot displays two overlapping windows from the Crystal Reports software. The top window, titled 'Report Viewer', shows a preview of a report titled 'World Sales Report' for 'xtreme Mountain Bikes'. The report includes a pie chart and a table of sales data for the top 5 countries.

Country	Total Sales
USA	\$67,873,051.69
Germany	\$16,077,710.02
England	\$10,070,228.17
Switzerland	\$11,223,000.00
Italy	\$11,042,200.46
Others	\$61,259,714.08

The bottom window, titled 'Working with Suppliers.doc - Microsoft Word', shows a document titled 'Q4 Sales Execution'. The document includes an introduction and a bar chart showing 'Net Sales' by quarter from Q1 2000 to Q4 2001. A context menu is open over the chart, listing options such as 'Go To Report...', 'Edit Formula...', and 'Refresh'.

Crystal Products – Proven

- 10th generation technology
 - Continuously evolved over 12 years
- A market standard
 - Over 15 million licenses shipped



Demonstration

Customer Value

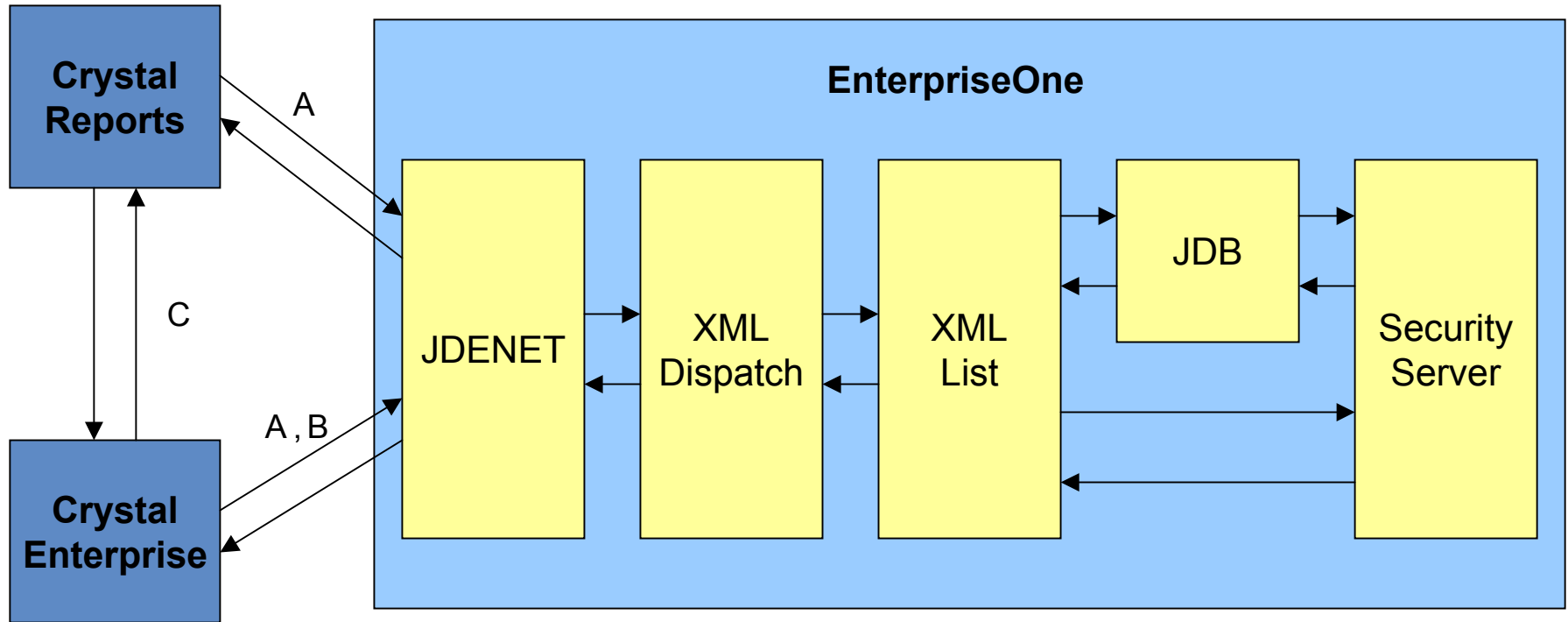
- Tight integration with a world-class enterprise reporting environment
 - Addresses requirements of professional report authors **and** business users
 - Cost-effective to acquire additional capabilities
- Capability to report from multiple EnterpriseOne instances from a single infrastructure
- A PeopleSoft solution for support, sales, and service

- Note: RDA and UBE are not being replaced or deprecated

What Integration will be Delivered, When?

- Initial integration delivered with JD Edwards EnterpriseOne Tools 8.94 – available now
- EnterpriseOne security plug-in
 - Uses EnterpriseOne security to authenticate users
 - Maps EnterpriseOne roles to groups in Crystal Enterprise
- EnterpriseOne data adapter
 - Enforces table row and table column security
 - Works with business views and tables
 - Adds UDC descriptions to the list of available columns
 - Performs data decimal scrubbing and Julian date conversions

EnterpriseOne and Crystal Integration



A – Database access: data and metadata

B – Authentication, Role / User Retrieval

C – Save to / load from Crystal Enterprise

- Beginning with EnterpriseOne Tools 8.94 (8.9, 8.10, and 8.11 Applications), JD Edwards EnterpriseOne customers will receive:
 - 10 users of Crystal Reports
 - 3 Concurrent Access License (3 CAL's) of Crystal Enterprise
- Additional blocks of CAL's can be purchased if and when they are needed

- EnterpriseOne Crystal Reporting Datasheet and FAQ documents are posted on Customer Connection under
 - Products + Industries
 - Application Development, Integration, + Portals
 - Reporting and Analytics

Questions & Answers